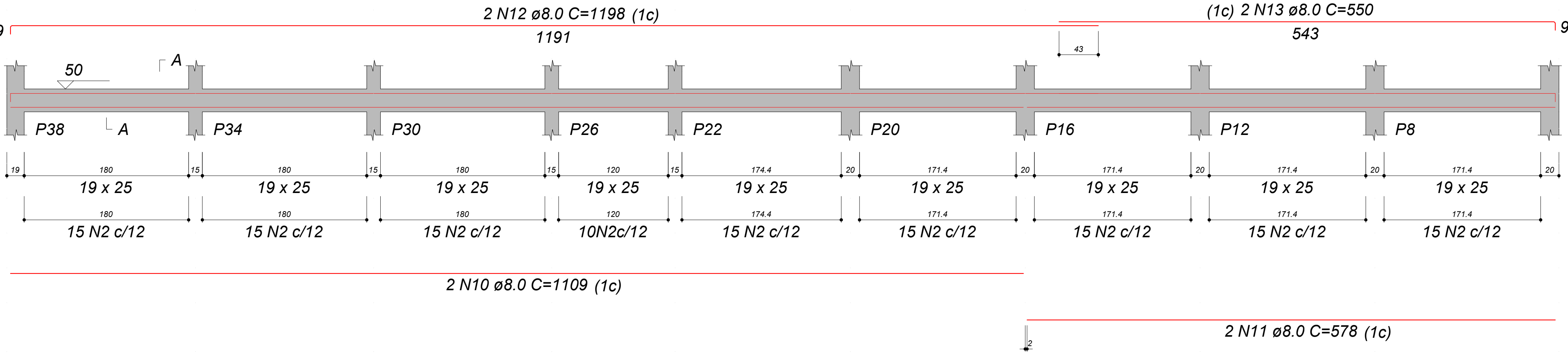
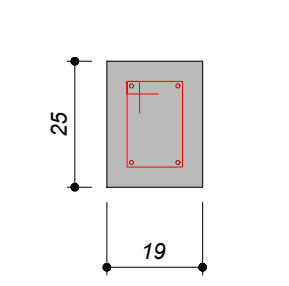


VB114

ESC 1:30



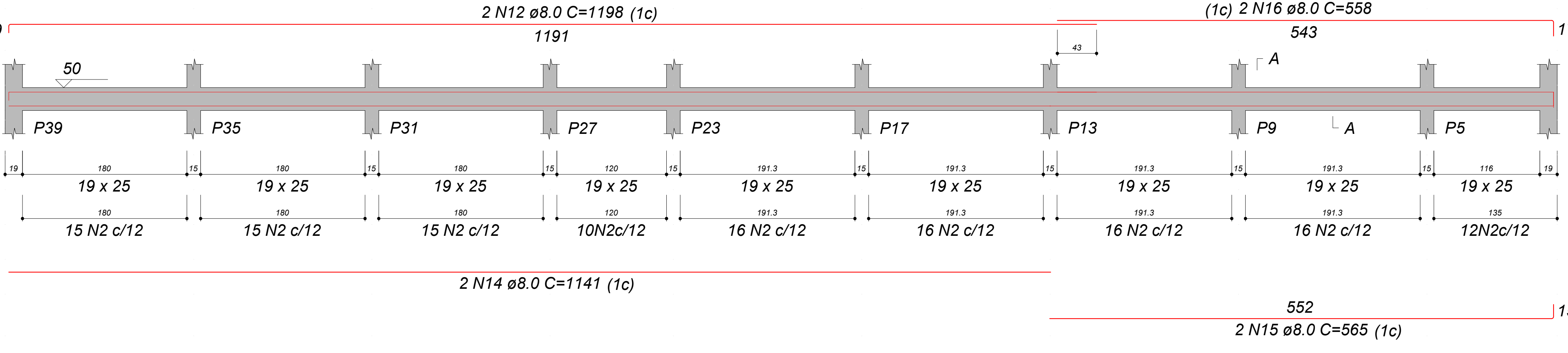
SEÇÃO A-A
ESC 1:15



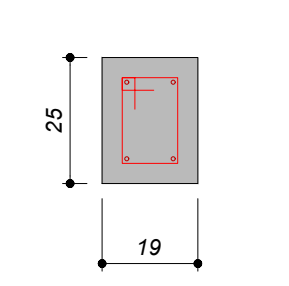
17
11
130 N2 ø5.0 C=67

VB115

ESC 1:30



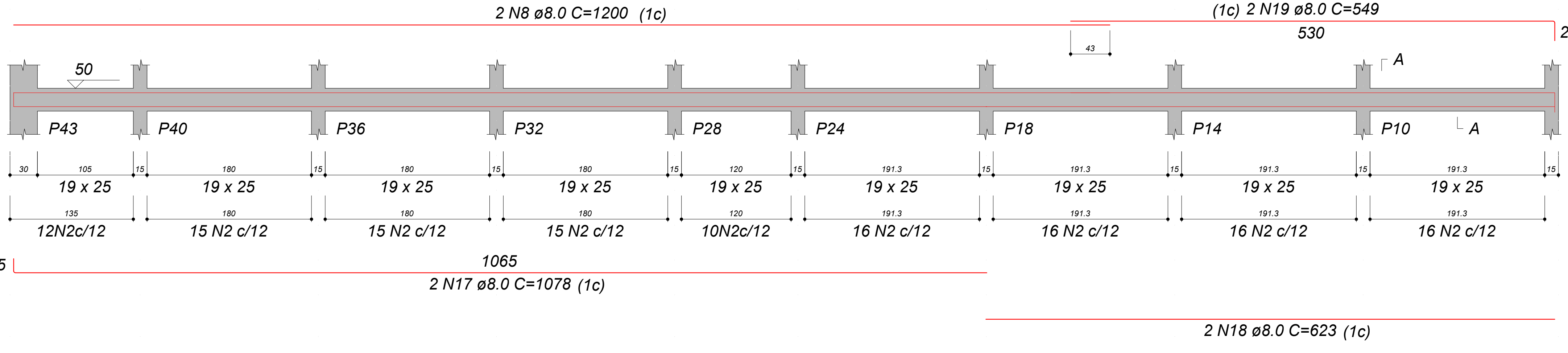
SEÇÃO A-A
ESC 1:15



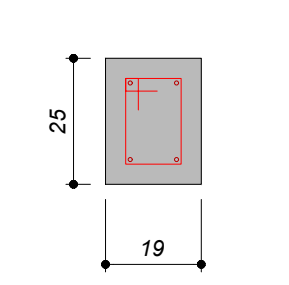
17
11
131 N2 ø5.0 C=67

VB116

ESC 1:30



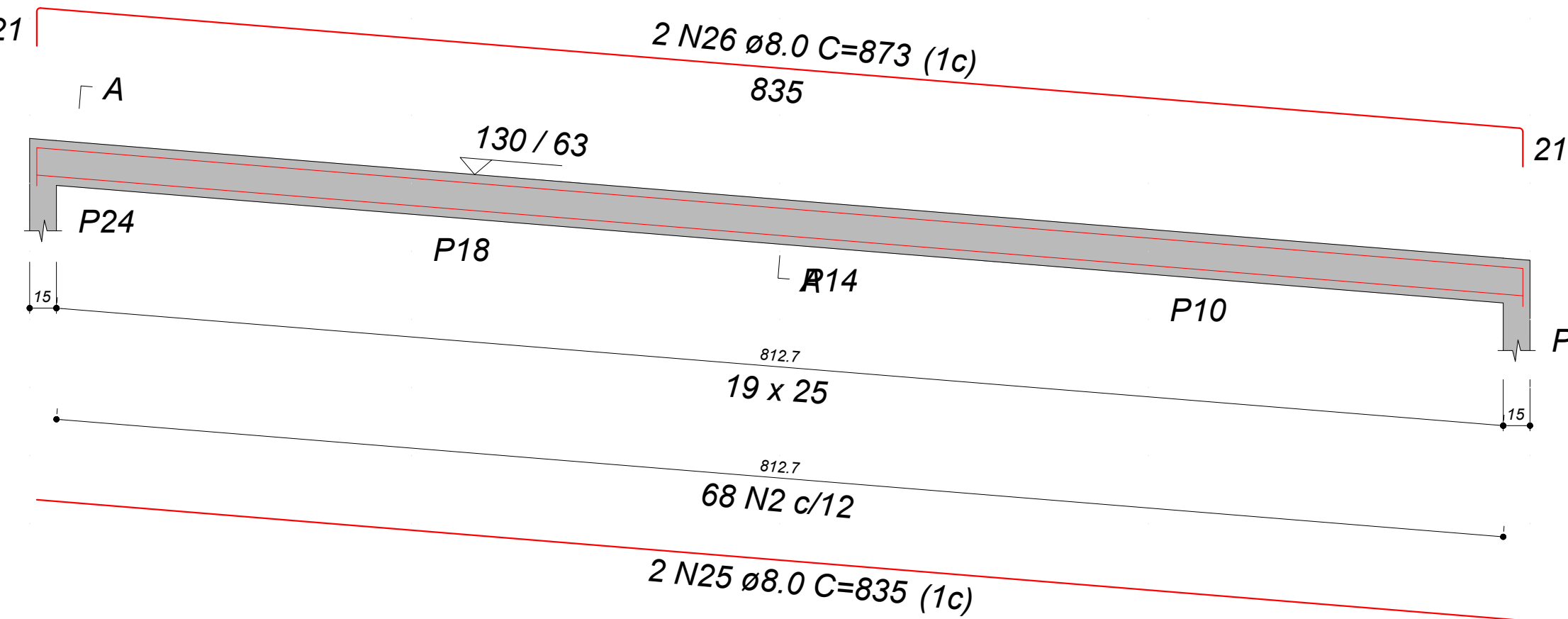
SEÇÃO A-A
ESC 1:15



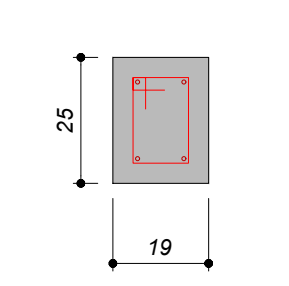
17
11
131 N2 ø5.0 C=67

VB206

ESC 1:30



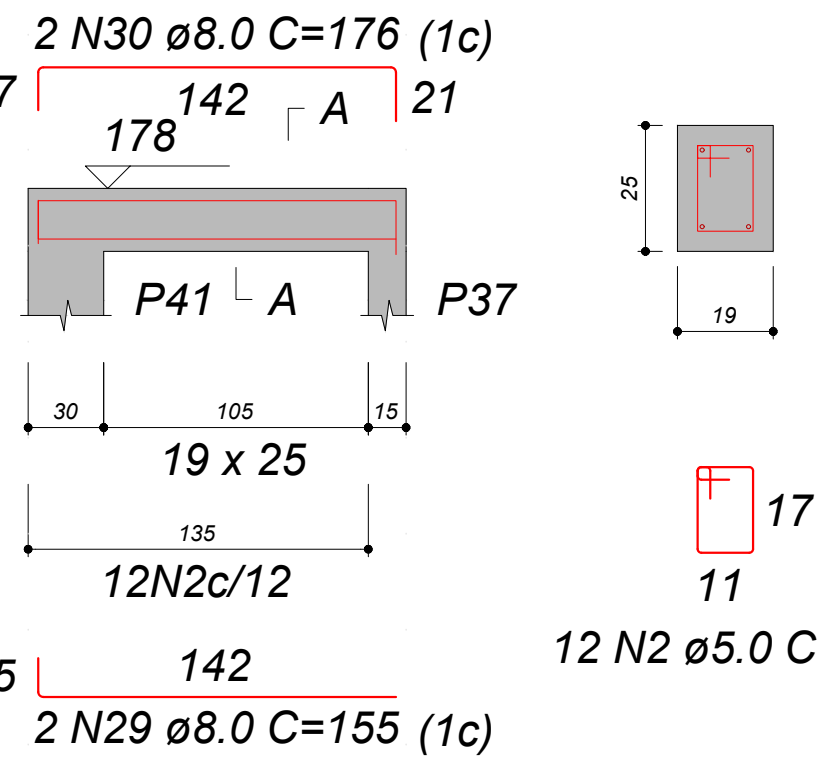
SEÇÃO A-A
ESC 1:15



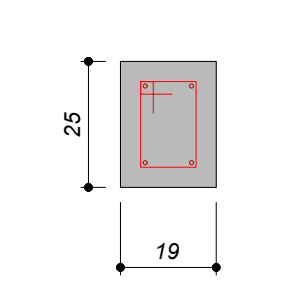
17
11
68 N2 ø5.0 C=67

VB304

ESC 1:30



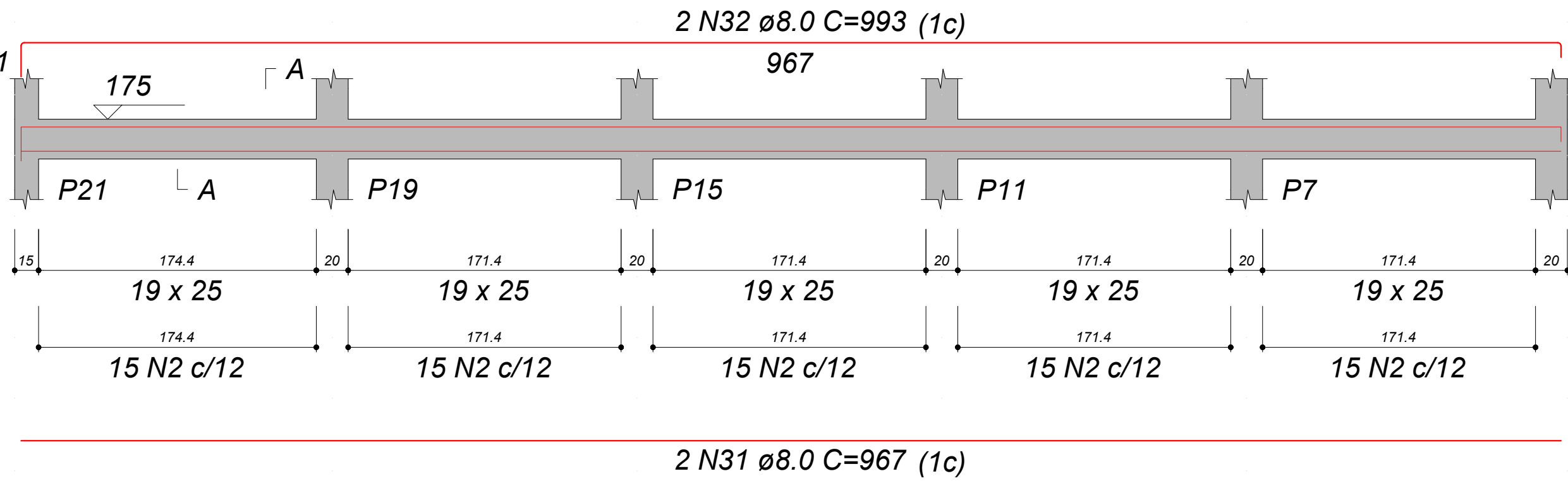
SEÇÃO A-A
ESC 1:15



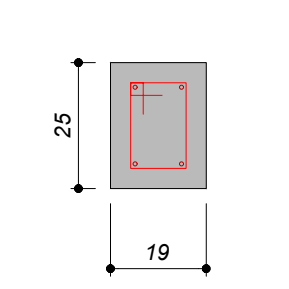
17
11
12 N2 ø5.0 C=67

VB305

ESC 1:30



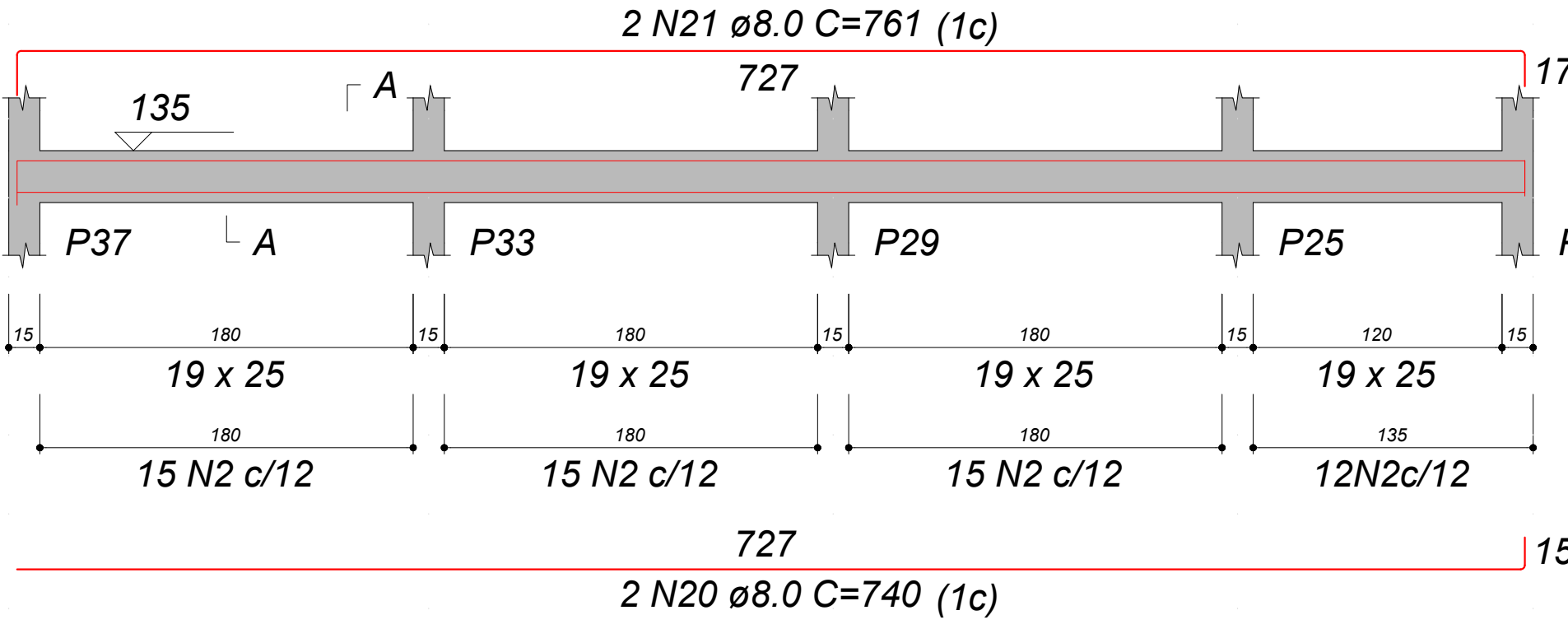
SEÇÃO A-A
ESC 1:15



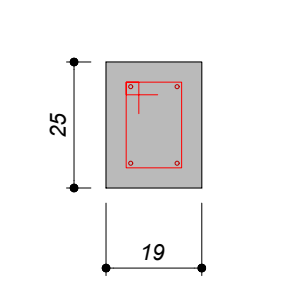
17
11
75 N2 ø5.0 C=67

VB201

ESC 1:30



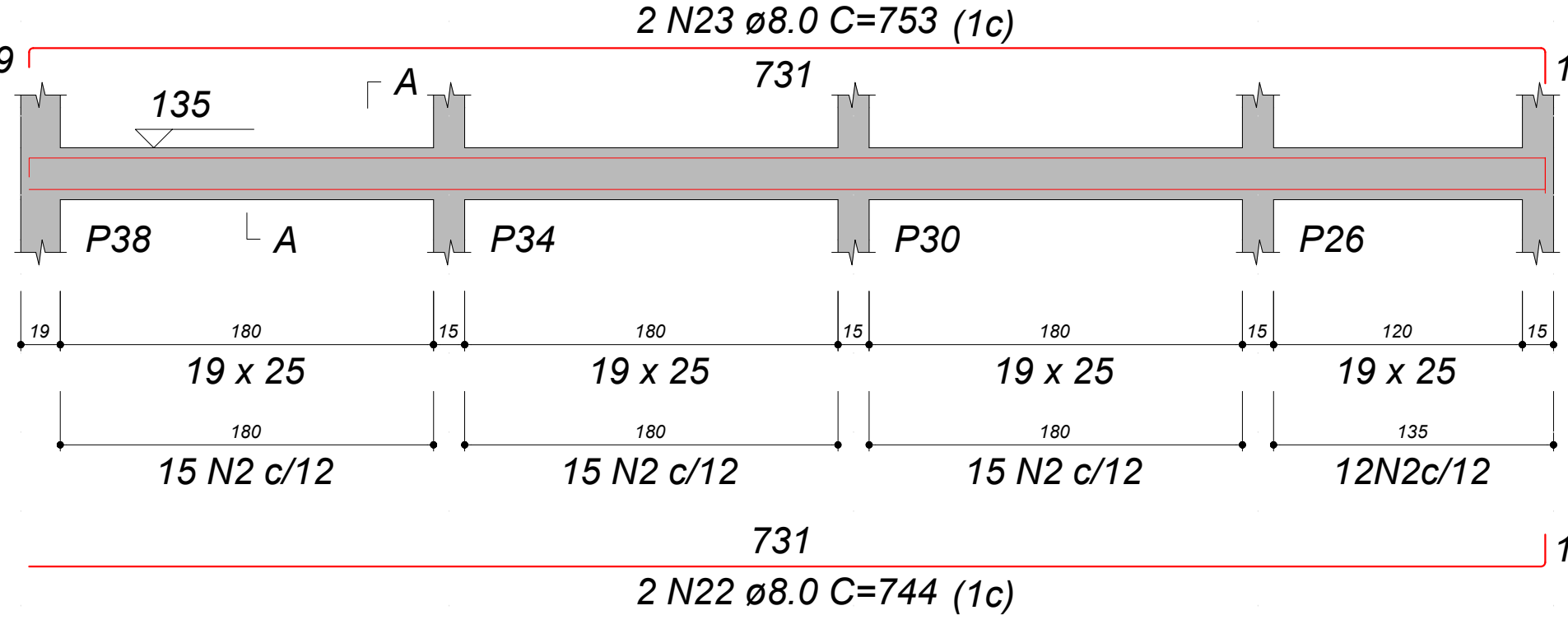
SEÇÃO A-A
ESC 1:15



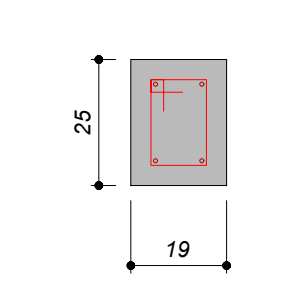
17
11
57 N2 ø5.0 C=67

VB202

ESC 1:30



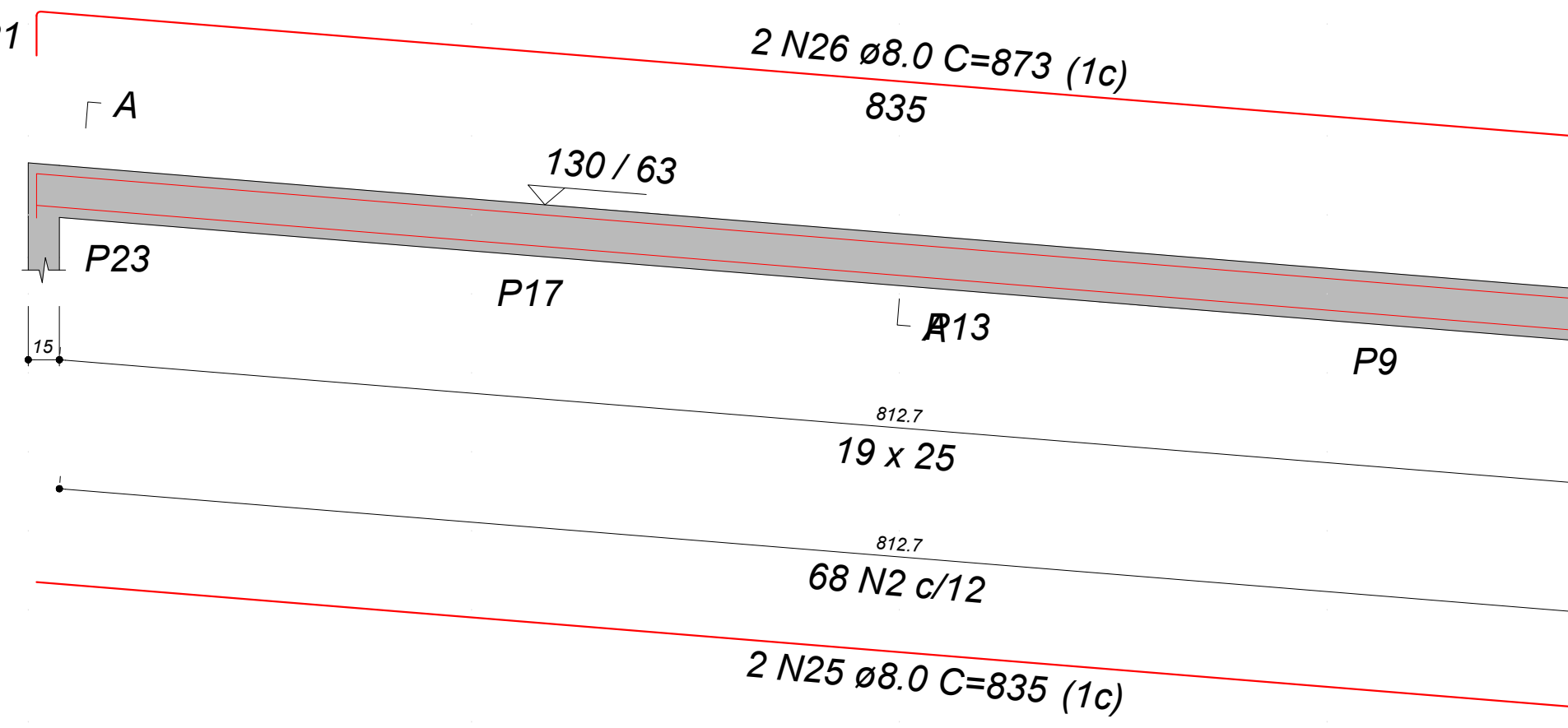
SEÇÃO A-A
ESC 1:15



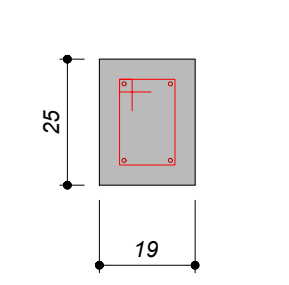
17
11
57 N2 ø5.0 C=67

VB205

ESC 1:30



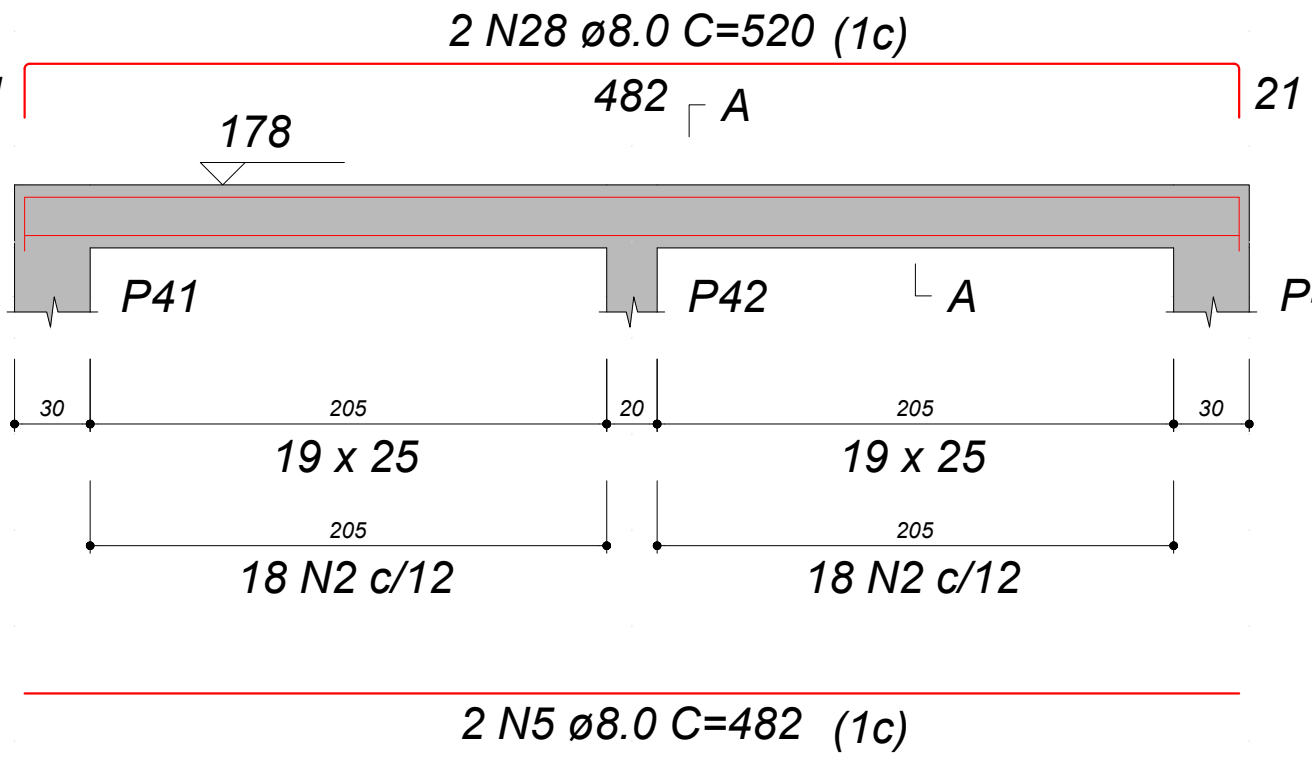
SEÇÃO A-A
ESC 1:15



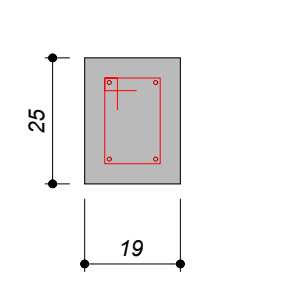
17
11
68 N2 ø5.0 C=67

VB303

ESC 1:30



SEÇÃO A-A
ESC 1:15



17
11
36 N2 ø5.0 C=67



ESTADO DE GOIÁS
SECRETARIA DE ESTADO DA EDUCAÇÃO
SUPERINTENDÊNCIA DE INFRAESTRUTURA
GERÊNCIA DE PROJETOS E INFRAESTRUTURA

GERÊNCIA DE PROJETOS E INFRAESTRUTURA
APROVADO
ELENCO RESPONSÁVEL PELA APROVAÇÃO

CE PROF. JOAQUIM FRANCISCO SANTIAGO

RAMPA DE ACESSO PRINCIPAL

ENDEREÇO _____					
AV. CONTORNO, JARDIM IPANEMA, NIQUELÂNDIA. CEP 76420000					
ÁREA DO TERRENO	ÁREA EXISTENTE	ÁREA DE REFORMA	ÁREA A CONSTRUIR	ÁREA TOTAL A CONSTRUIR	ÁREA TOT
VER PROJ. ARQ.	VER PROJ. ARQ.	VER PROJ. ARQ.	VER PROJ. ARQ.	VER PROJ. ARQ.	VER PROJ.

AUTOR: ENG. JOÃO GABRIEL PEREIRA SILVA - CREA: 1021667850

RT DA OBRA:

PROPRIETÁRIO: SECRETARIA DE ESTADO DA EDUCAÇÃO CNPJ: 01.409.705/0001-20
PREPOSTO: SABRINA SILVA VIEIRA VALENTE CPF: 041.530.091-64

ESTRUTURA CONCRETO

TIPO DE PROJETO

DETALHAMENTO DAS VIGAS

ASSUNTO:

DATA: SETEMBRO/2025 ESCALA: INDICADA REVISÃO: 00 Nº PRIORIT: 1020250288273

REV. DATA DESCRIÇÃO VISTO

7/8

FOLHA

DETALHAMENTO DAS VIGAS
ESCALA INDICADA